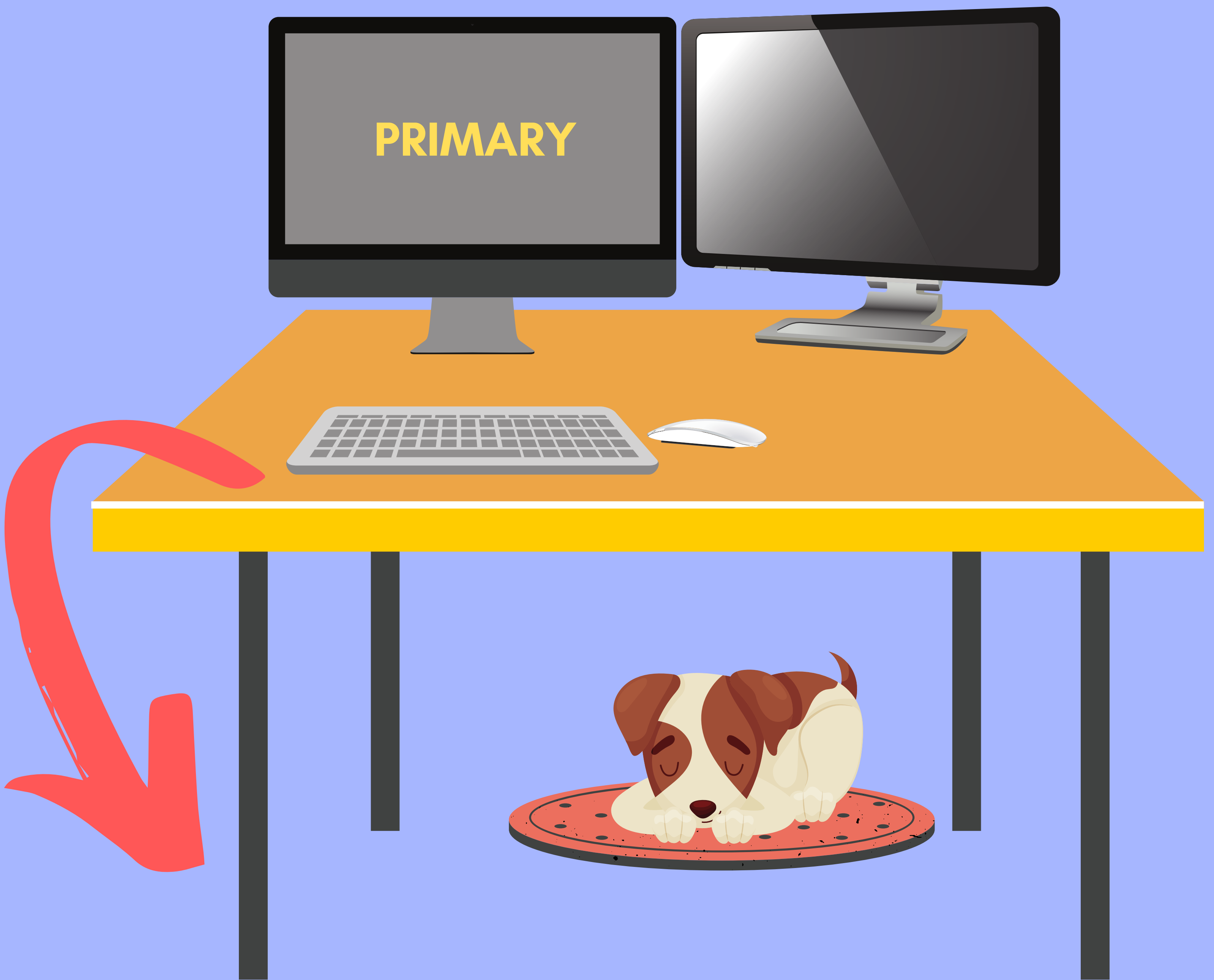


# ONE PRIMARY MONITOR

MOST WORK IS DONE ON A SINGLE SCREEN



- Position the primary monitor directly in front of you
- On either side (personal preference), position the secondary monitor as close as you can - OR - touching (without overlapping) the edge of the primary monitor
- Make sure to adjust the secondary monitor toward you at a slight angle
- Place keyboard in a central position to the primary screen

